



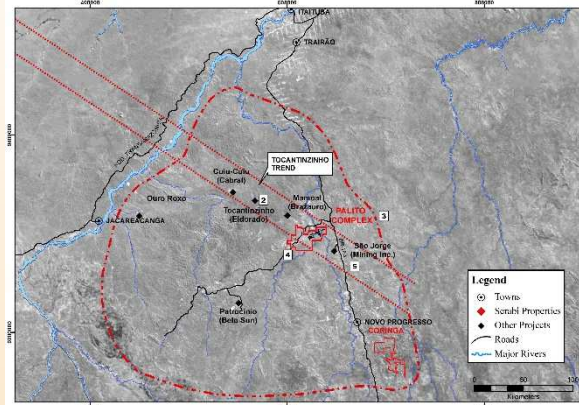
SERABI GOLD

BUILDING A BRAZILIAN MID-TIER GOLD PRODUCER
CLEAR PATHWAY TO 100KOZ GOLD PRODUCTION WITHIN 2 YEARS

AIM - SRB
TSX - SBI



- ❑ EXISTING CASH FLOW AND PRODUCTION FROM 40,000 OZ UNDERGROUND OPERATION
- ❑ TARGETING GROWTH TO >100KOZ WITHIN 2 YEARS
 - ORGANIC GROWTH AT PALITO COMPLEX TO GENERATE ADDITIONAL 30KOZ PA
 - DEVELOPMENT OF CORINGA PROJECT FOR 30-40KOZ PA
- ❑ CURRENT MINEABLE RESERVES OF ~8.0G/T
- ❑ TARGETING AN INCREASE IN TOTAL GEOLOGICAL RESOURCES FROM 900KOZ TO 2MOZ OF GOLD BY 2020



PALITO COMPLEX

- ❑ TWO OREBODIES – PALITO AND SAO CHICO
- ❑ MINING ~500 TPD AT 7-10 G/T AU, USING SELECTIVE MINING. THE MINE IS DRY WITH EXCELLENT GROUND CONDITIONS
- ❑ EXPERIENCED MINING PERSONNEL AT SITE WITH PROVEN EXPERIENCE IN UNDERGROUND SELECTIVE MINING
- ❑ GOLD PRODUCTION IS A COMBINATION OF COPPER/GOLD FLOTATION CONCENTRATE, FOLLOWED BY CYANIDATION OF FLOTATION TAILINGS (PALITO), AND STRAIGHT CYANIDATION (SAO CHICO) - RECOVERIES AVERAGE 91-94%



CORINGA PROJECT

- ❑ HIGH GRADE, ADVANCED PROJECT CURRENTLY IN PERMITTING. CAMP CONSTRUCTED AND PROCESS PLANT AT SITE
- ❑ TRIAL MINING LICENCE GRANTED AND UNDERGROUND DEVELOPMENT COMMENCING Q4,2018
- ❑ A 'CARBON COPY' OF PALITO, LOCATED 200KM AWAY
- ❑ A COMPELLING CONTINUOUS 8KM STRIKE OF HISTORICAL ARTISANAL WORKINGS



CORPORATE

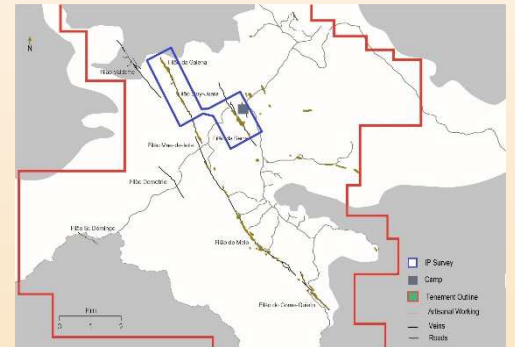
- ❑ CURRENT MARKET CAP : US\$40M
- ❑ 59 MILLION SHARES IN ISSUE
- ❑ RECENT SHARE PRICE : £0.53 / C\$0.88
- ❑ 52 WEEK RANGE £1.08 TO £0.50
- ❑ CASH – US\$21.0 MILLION
- ❑ BANK DEBT – US\$7.0 MILLION
- ❑ NET ASSETS – US\$74.5 MILLION



CORINGA

PERMIT, BUILD AND GROW

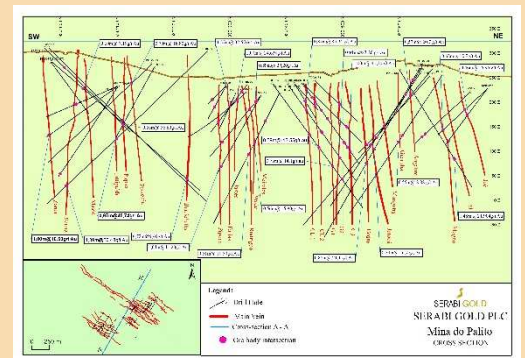
- ❑ 30-40 KOZ PA. PRODUCTION TARGETED
- ❑ SMALL PORTION OF 8KM LONG STRIKE ZONE OF ARTISANAL MINING
- ❑ PREPARATIONS FOR UNDERGROUND MINE DEVELOPMENT UNDERWAY
- ❑ DRILL PROGRAMME PLANNED FOR Q4 2018 WITH UPDATED NI43-101 RESERVE AND RESOURCE UPDATE ISSUED Q2 2019 AND PEA ISSUED END Q2 2019



PALITO COMPLEX

DRILL, EXPAND RESOURCE, EXPAND OPERATIONS

- ❑ MINERALISATION NOW TRACED OVER 4 KILOMETRES WITH EXPLORATION DRILLING UNDERWAY
- ❑ SAO CHICO OREBODY HOSTED WITHIN REGIONAL SHEAR ZONE WITH SIGNIFICANT ARTISANAL ACTIVITY AND POTENTIAL FOR RESOURCE GROWTH
- ❑ SIGNIFICANT IP ANOMALIES INDICATIVE OF PARALLEL STRUCTURES



MINERAL RESOURCES AND RESERVES

- ❑ TOTAL GROUP MINERAL RESERVES OF OVER 340KOZ
- ❑ RESERVE GRADE OF CURRENT MINING OPERATIONS ~8:00 G/T
- ❑ TOTAL GROUP MINERAL RESOURCES OF OVER 910KOZ

